



Agency for Healthcare Research and Quality

Advancing Excellence in Health Care

www.ahrq.gov

CHIPRA IOM STUDY

AHRQ Activities and Perspective

Denise Dougherty, Ph.D.
Senior Advisor, Child Health and Quality Improvement
December 14, 2009



Overview

- n Background and Context
- n AHRQ CHIPRA Quality Measurement Activities
- n AHRQ Data collection and information activities
- n Thoughts from AHRQ
- n Acronyms



Health + Healthcare = An Extraordinary Opportunity

n Legislative Charge:

- Make recommendations regarding improving and strengthening the timeliness, quality, and public transparency and accessibility of information about child *health and health care quality*

n *Can we get beyond public health versus healthcare?*



CHIPRA Title IV – The What

n Measurement

- Identify initial core set by 1/1/2010
- Establish pediatric quality measures program
- Identify improved core set by 1/1/2013



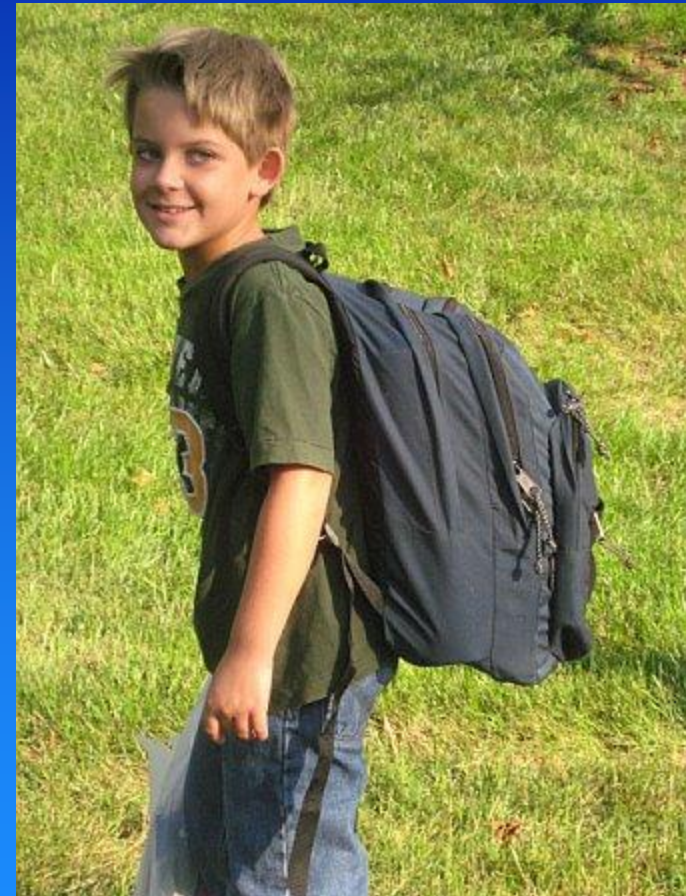
n Model Electronic Health Record Template

n Evaluation of CMS Demonstration Projects



CHIPRA Title IV – The Who (Heaving Lifting)

- n MOU – AHRQ and CMS, April 2009
 - IAAs, IDDA
- n CHIPRA Federal Quality Workgroup
 - ASPE
 - ONC
 - HRSA
 - Indian Health Service
 - SAMHSA





CHIPRA – Quality Measures Phase 1

- n** Phase 1: Identify initial core set of children’s healthcare quality measures for voluntary use by:
 - State Medicaid and CHIP Programs
 - health insurance issuers and managed care entities that enter into contracts with such programs, and
 - providers of items and services under such programs



CHIPRA – Initial Core Set Quality Measures – Phase 1 – How

- n Publicly Transparent, Multi-Stakeholder Engagement
- n Commissioned Papers
- n Experts and Stakeholders:
 - AHRQ National Advisory Council on Healthcare Research and Quality
 - n Subcommittee on Children’s Healthcare Quality Measures for Medicaid and CHIP (SNAC), June – November 2009
 - n Nominations of Measures
 - n Scoring Criteria: Validity, Feasibility, Importance
 - n Meetings and Prework July 24-September 18, 2009
 - September 18, 2009—Recommended initial core set of 25 measures
 - September 30, 2009 - CMS Listening Session with quality contacts
- n Departmental Clearance – 24 measures for public comment – posted any day now!



Core Set -- Commissioned Papers – Phase I--Specific Measure Topics

- n** Focus for each topic-specific paper:
 - Conceptual framework
 - Validity, reliability, feasibility of available measures
 - Recommendations for core set

- n** Topics:
 - Availability of services (Kuhlthau*)
 - Duration of enrollment (Kenney)
 - Most integrated healthcare settings (Sternberg and Homer)
 - Family experiences (Co and Homer)
 - Mental and behavioral health (Bickman)

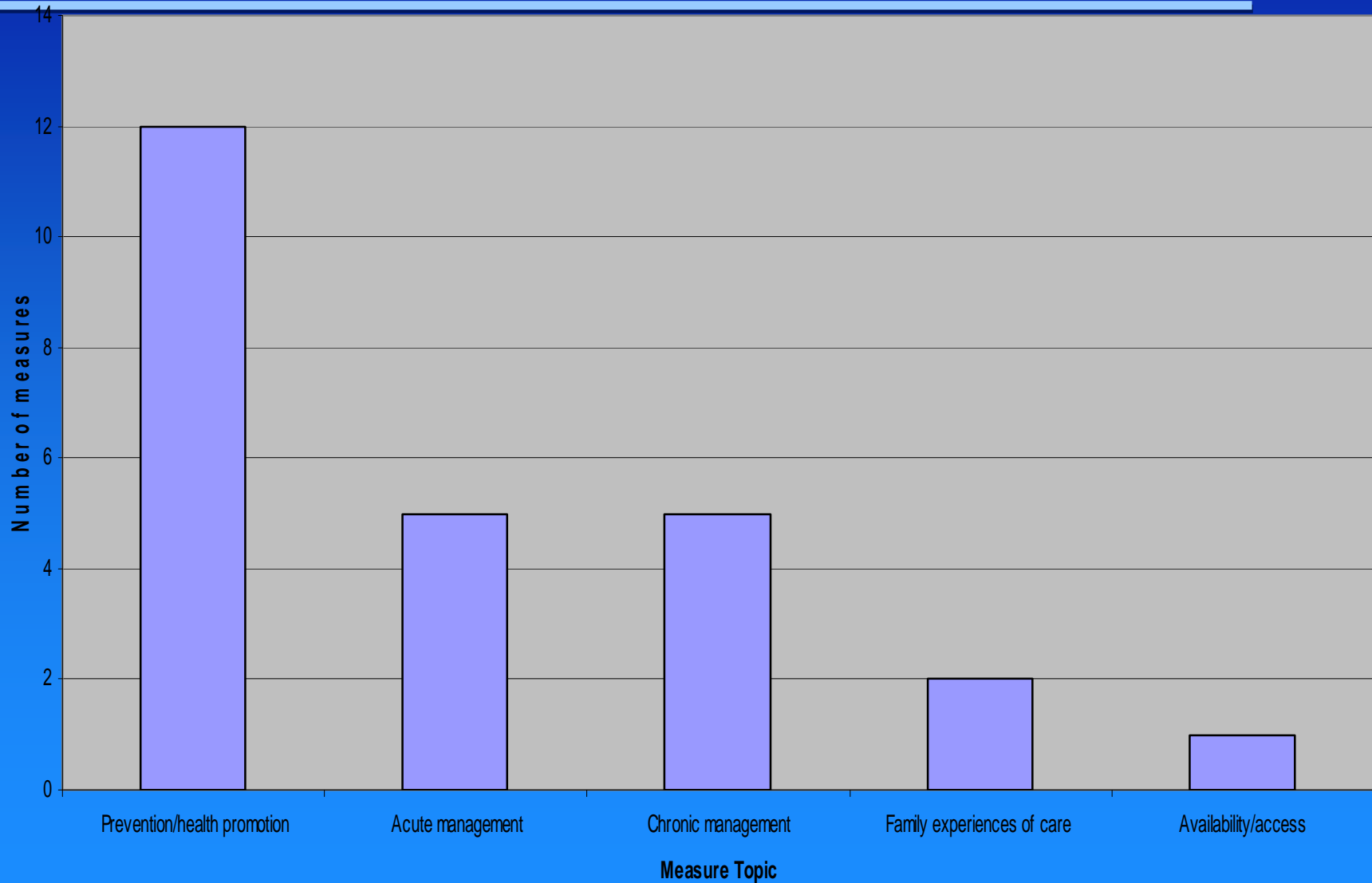


Phase I--Commissioned Papers 2

- n** Analysis of recent surveys of State Medicaid and CHIP Directors (NASHP; HMA)
 - Measures in use (broadly)
 - Need for measures and measure TA
 - Use of race/ethnicity data
 - Use for quality improvement
- n** Potential use of MSIS (MacTaggart)
- n** Environmental scan for additional measures in use (Econometrica)



RESULTS: SNAC Recommended Core Measures By CHIPRA Topic



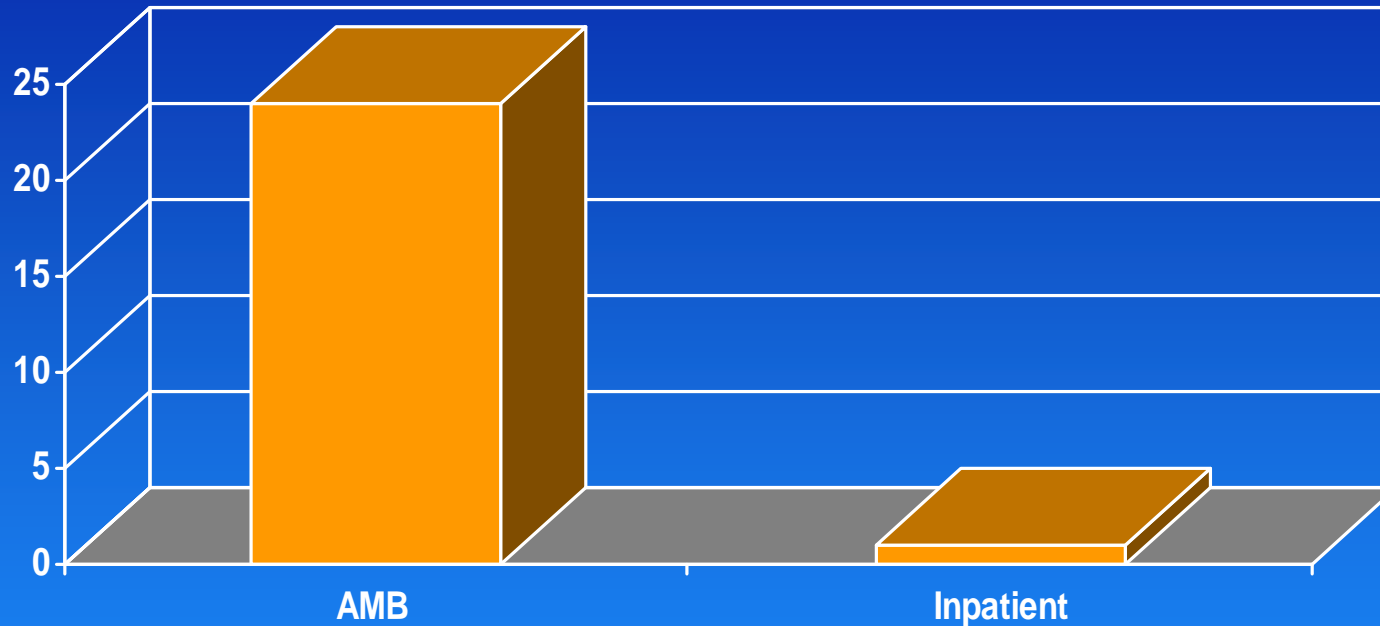


SNAC Recommendations – # Measures by Health Condition

Condition	#
Pregnancy	4
Vaccine-preventable	2
Overweight	1
Social/emotional/mental	4
Dental	3
Upper Respiratory Infection – antibiotic overuse	2
Asthma	1
Diabetes	1
Sexually transmitted infections	1
Hospital-associated infection	1
Multiple conditions	5



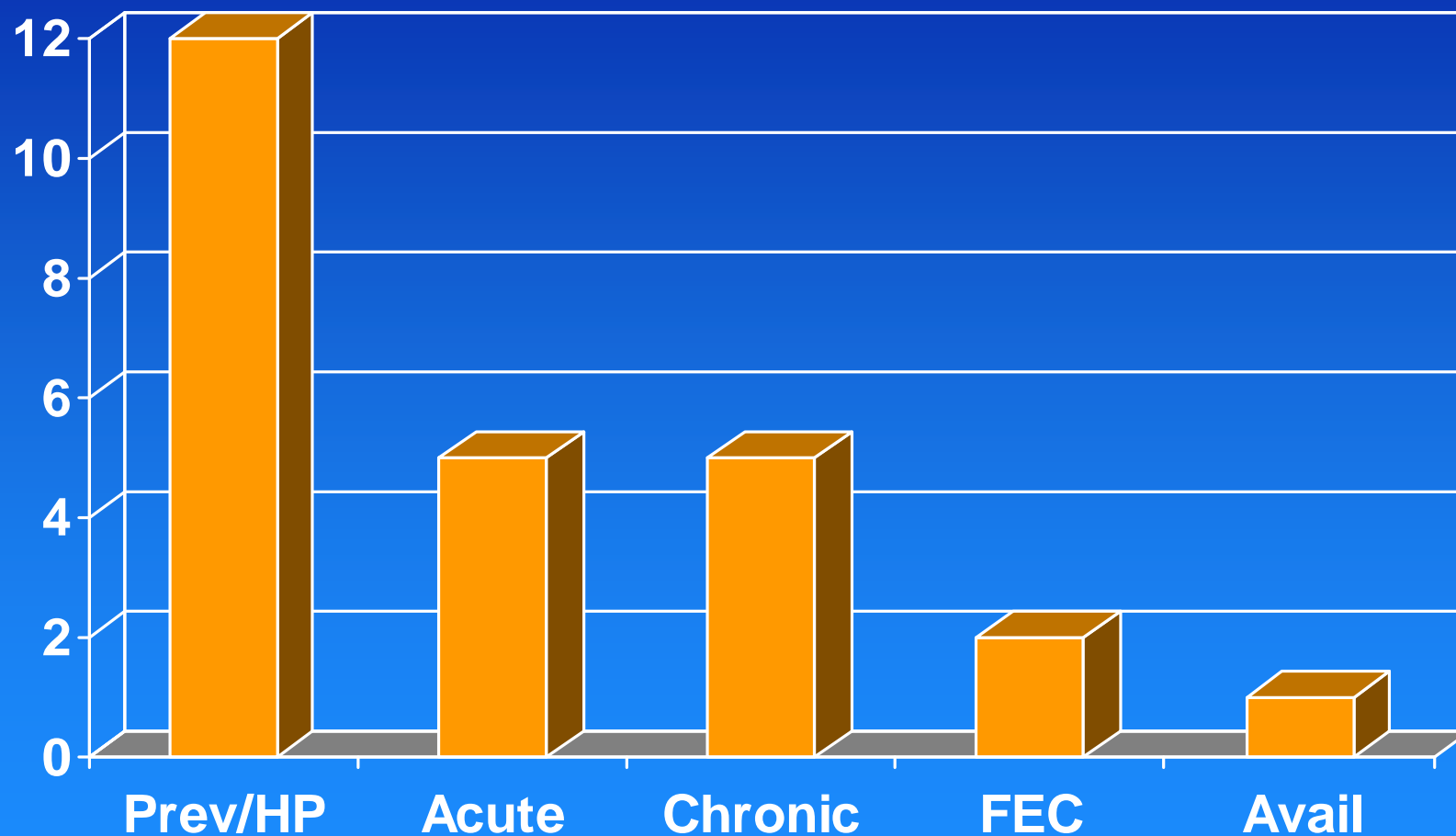
All but One Measure is for Ambulatory Settings



Source: AHRQ, based on SNAC report to NAC;
Note: Ambulatory includes ED, dental and specialty care



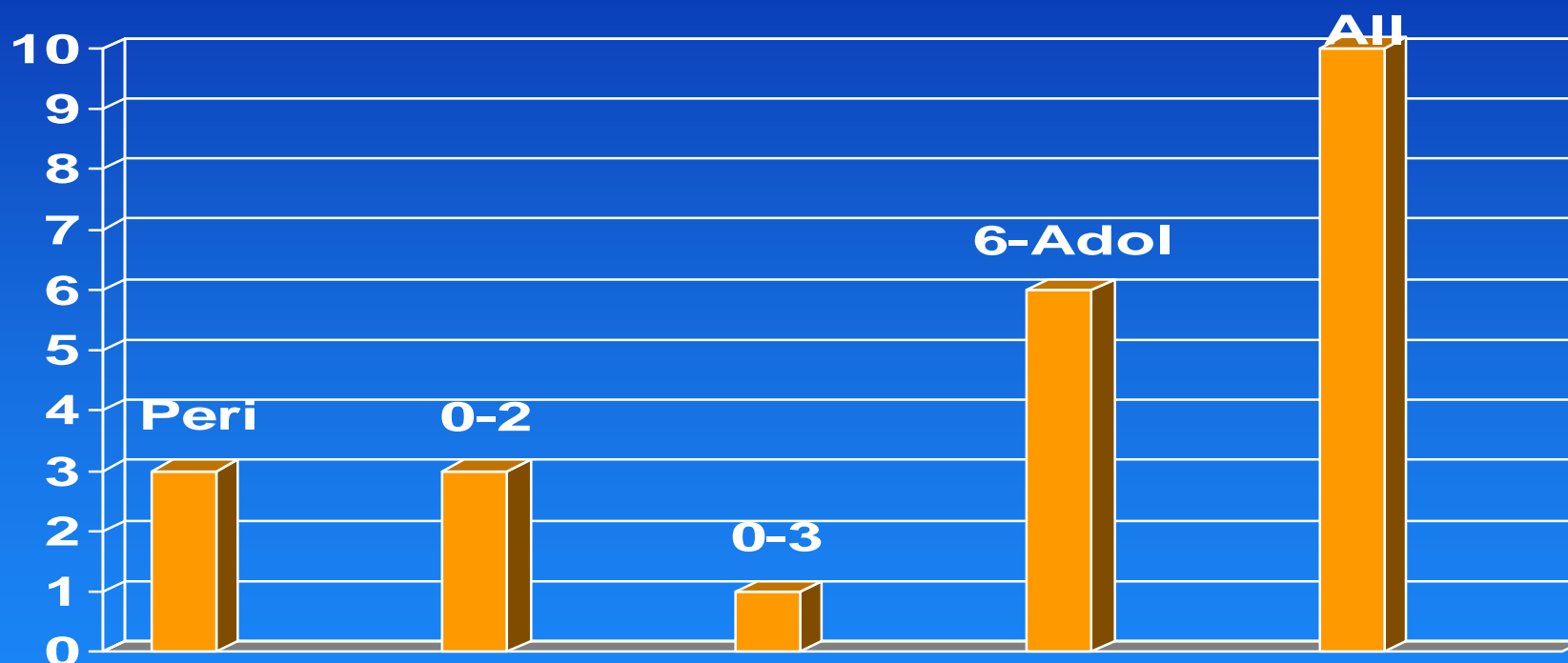
Most Measures Focus on Prevention/Health Promotion



Source: AHRQ, based on SNAC report to NAC



Most Measures Cross All or Most Age Groups

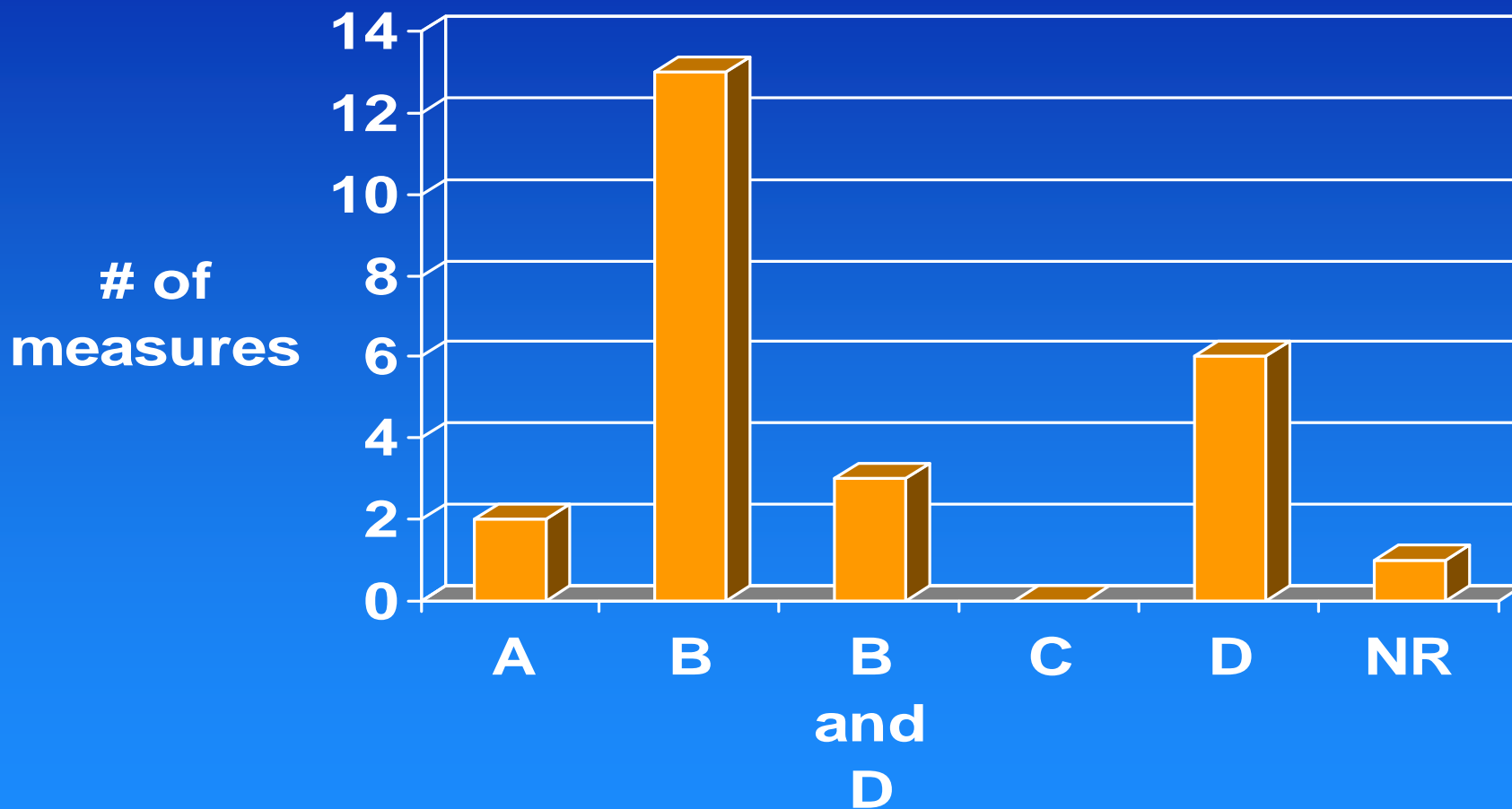


Source: AHRQ, based on SNAC report to NAC

Note: SNAC voted to include all WCV ages 15 mos-13 yo as one measure. Perinatal measures are for babies; they are not counted separately here as Adolescent measures.



Modal Evidence Grade was B



Source: AHRQ, based on SNAC report to NAC



CHIPRA Quality Measures – Phase 2 - PQMP

- n Develop and enhance pediatric healthcare quality measures
 - Using priorities set by multiple stakeholders
 - Grants and contracts





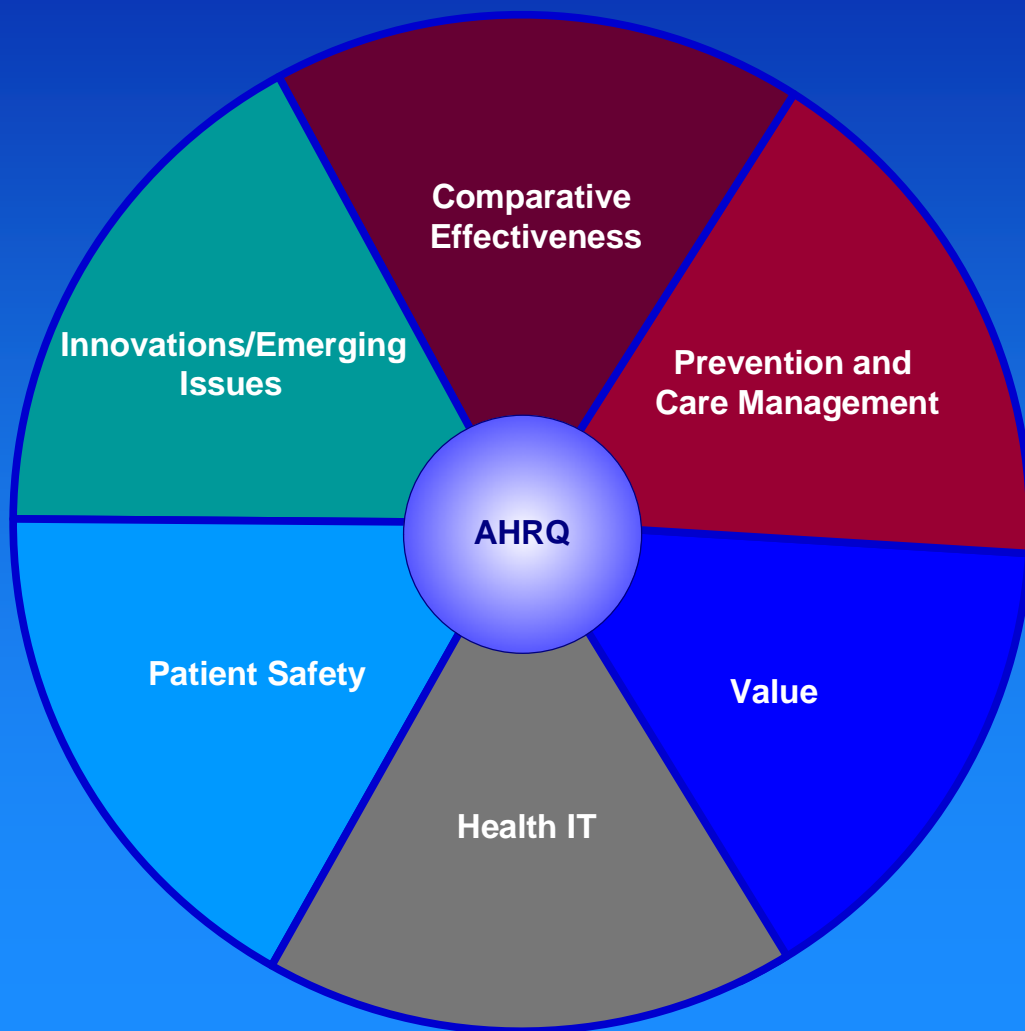
CHIPRA PQMP – How

- n Priority Setting – Engage Multiple Stakeholders
 - Process under construction
- n Measure Criteria
 - Expert Meeting at AHRQ
 - February 24-25, 2009
 - Goal: Adapt (if needed) current criteria (e.g, NQF, NCQA) to meet needs of CHIPRA
- n GOAL:
Grantees/Contractors will work on priorities using measure criteria





AHRQ's 6 Portfolios of Work





AHRQ Information and Data Sources – A Brief List

n Ongoing Data Collection/Analysis Efforts

- Medical Expenditure Panel Survey
- Healthcare Cost and Utilization Project
- CAHPS®
- New – Patient Safety – Common Formats

n Dissemination of data and measures

- National Healthcare Quality and Disparities Reports
- National Quality Measures Clearinghouse
- Papers/Statistical Briefs based on MEPS and HCUP
- CAHPS National Benchmarking Database



Thoughts from AHRQ on Committee Work



n Health Information Technology!

- Critical to the future of healthcare quality measurement and improvement
- Consider:
 - n As a data delivery system
 - n As a provider-facing reporting intervention
 - n Interoperability beyond the traditional medical care system
 - n Ability to merge different data sources
- Consult Jon White, AHRQ



Thoughts from AHRQ on Committee Work

- n** Evidence base for healthcare quality measures
 - Challenge 1: paucity of evidence for clinical measures
 - Challenge 2: paucity of evidence for structural (system design) measures
- n** Assessing racial, ethnic, SES, and health status disparities at the local level
- n** Data collection at actionable levels: Settings, not individuals

Thoughts, continued

- n A **framework** for priority setting for measure development, data collection, and improvement that would include kids
 - ? Beyond immediate direct medical costs
 - ? Take both short- and long-term impacts of poor quality into account
 - n How kids (and families) are affected while kids are still kids (pain)
 - n Long – the cumulative long-term impact of poor quality/poor health at an early age



n Questions? Comments?

n Contact:

- Denise.dougherty@ahrq.hhs.gov
- 301-427-1868





Acronyms

CAHPS®	Consumer Assessment of Healthcare Providers and Systems
CHIPRA	Children's Health Insurance Program Reauthorization Act
FEC	Family experiences of care
HMA	Health Management Associates
HRSA	Health Resources and Services Administration
IAA	Intra Agency Agreement
IDDA	Intra Departmental Delegation of Authority



Acronyms

MOU	Memorandum of Understanding
MSIS	Medicaid Statistical Information System
NASHP	National Academy for State Health Policy
NCQA	National Committee on Quality Assurance
NQF	National Quality Forum
PQMP	Pediatric [healthcare] Quality Measurement Program
SAMHSA	Substance Abuse and Mental Health Services Administration
SNAC	Subcommittee on Children's Healthcare Quality Measures for Medicaid and CHIP
SES	Socioeconomic status