



OFFICE OF BEHAVIORAL
AND SOCIAL SCIENCES RESEARCH
NATIONAL INSTITUTES OF HEALTH

*Wendy J. Nilsen, Ph.D.
National Academies of Science
Science of Families Planning
Workshop
July 13-14, 2010*



The Science of Families: Building the Field





- “NIH is the steward of medical and behavioral research for the Nation. Its mission is science in pursuit of fundamental knowledge about the nature and behavior of living systems and the application of that knowledge to extend healthy life and reduce the burdens of illness and disability.”

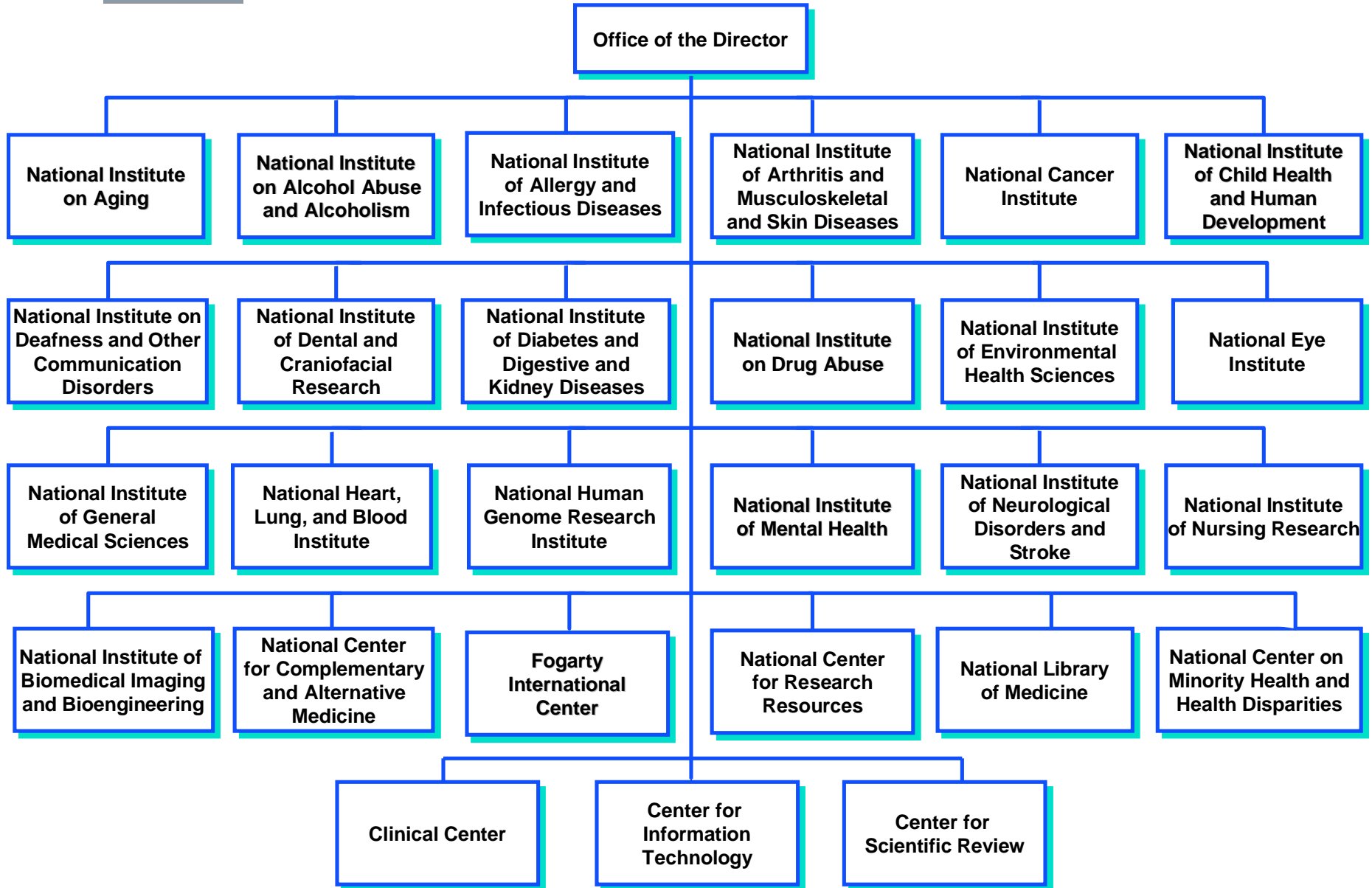




- The goals of the agency are as follows:
 - foster fundamental creative discoveries;
 - develop, maintain, and renew scientific human and physical resources;
 - expand the knowledge base in medical and associated sciences; and
 - exemplify and promote the highest level of scientific integrity, public accountability, and social responsibility in the conduct of science.



National Institutes of Health





- n 27 Institutes and Centers (ICs)
- n \$30.3 billion in FY2009
 - n Add'l \$10.4 billion ARRA funds
- n 80% of funds for grants and contracts supporting extramural research



OFFICE OF BEHAVIORAL
AND SOCIAL SCIENCES RESEARCH
NATIONAL INSTITUTES OF HEALTH

OBSSR Mission

Office of Behavioral and Social Sciences Research (OBSSR)

... to stimulate behavioral and social science research throughout NIH and to integrate these areas of research more fully into others of the NIH health research enterprise, thereby improving our understanding, treatment, and prevention of disease.

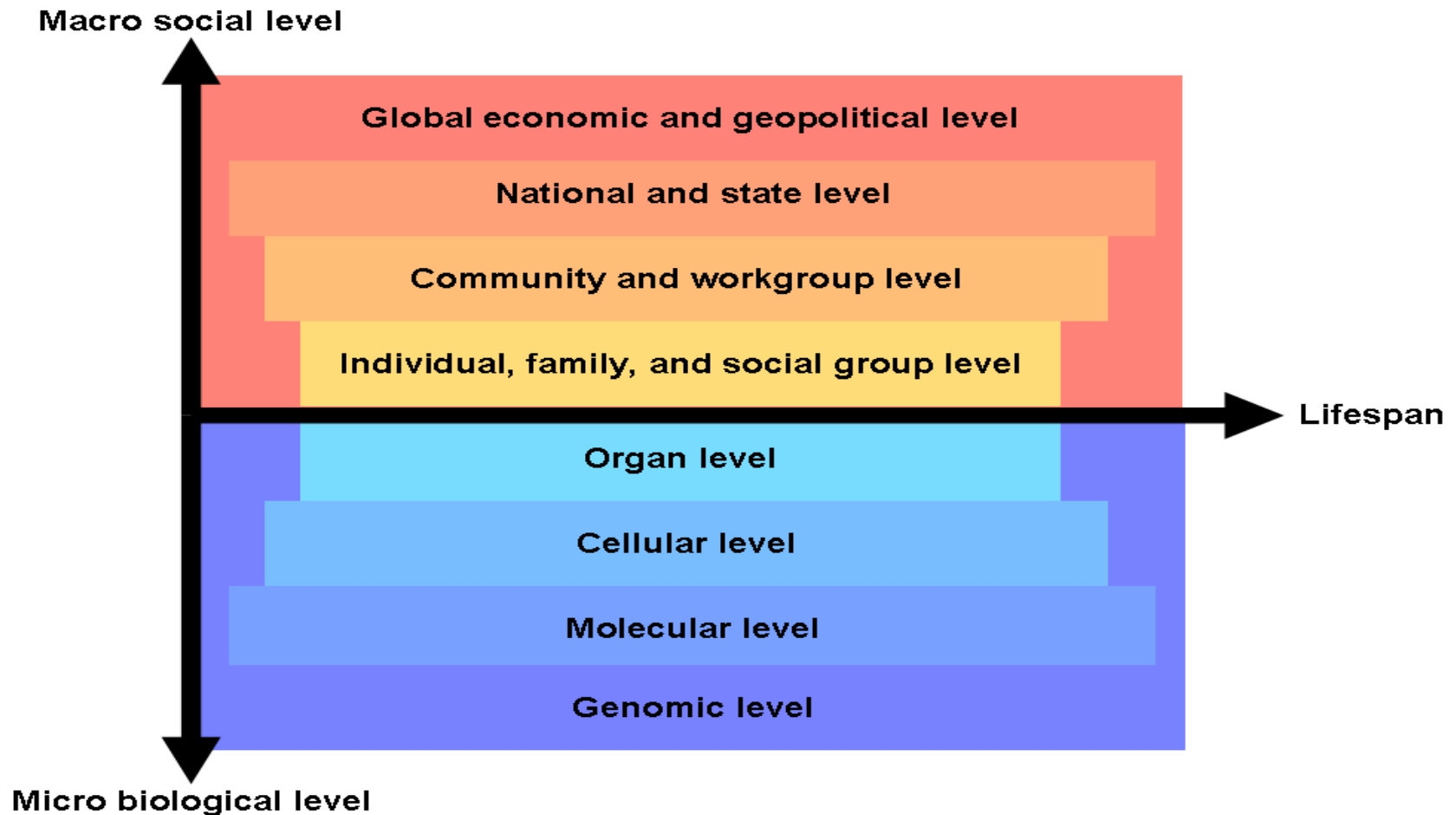




*As impressive as the strides in biomedicine are,
the NIH mission can't be fulfilled without it:*

- n 40-50% of deaths trace to behavioral causes
- n Low rates of adherence to medical treatment
- n Poor dissemination/implementation of biomedical advances
- n The fundamental causes of health disparities are social







- Family research can be found throughout NIH Institutes:
 - Eunice Kennedy Shriver National Institute of Child Health and Human Development
 - National Institute on Drug Abuse
 - National Institute of Aging
 - National Institute of Diabetes and Digestive and Kidney Diseases
 - National Institute of Heart, Lung and Blood
 - And many, many others





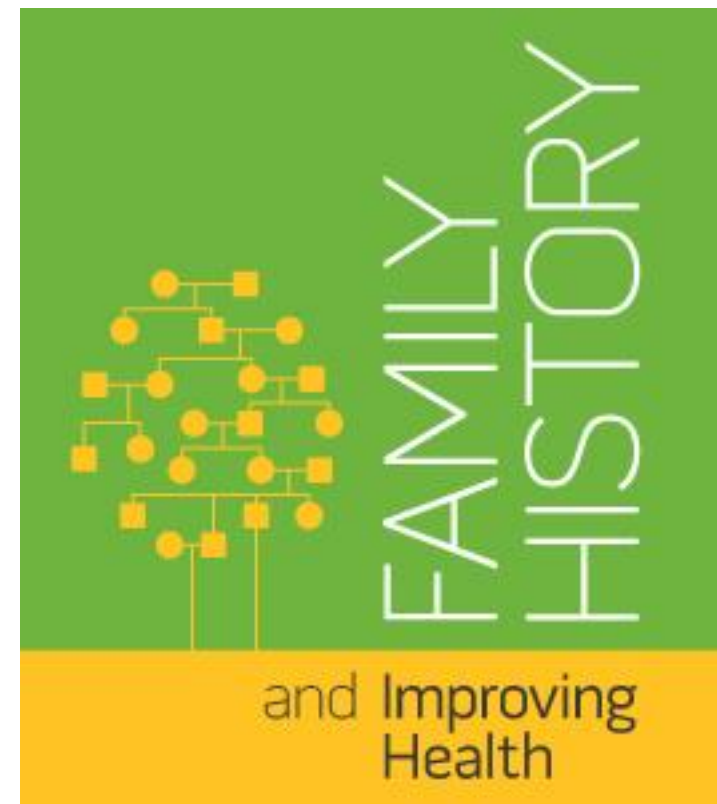
- **National Human Genome Research Institute**
- **My Family History (2004)**
 - Americans know that family history is important to health. A recent survey found that 96 percent of Americans believe that knowing their family history is important. Yet, the same survey found that only one-third of Americans have ever tried to gather and write down their family's health history.
 - Because family health history is such a powerful screening tool, the Surgeon General has created a computerized tool to help make it fun and easy for anyone to create a sophisticated portrait of their family's health.
 - [Access the My Family Health Portrait Web tool](https://familyhistory.hhs.gov/) at <https://familyhistory.hhs.gov/>.





**NIH State-of-the-Science Conference:
Family History and Improving Health**
August 24-26, 2009
Bethesda, Maryland

Conference explored what is known about:
The accuracy of family histories
The effects of collecting a family history
Science of family history collection





Team Science

- Team Science is a conceptualizing collaboration among scientists to look at most complex health, social, and environmental problems
- The goals of team science initiatives are quite diverse:
 - Scientific discovery
 - Training
 - Clinical
 - Translational
 - Public health
 - Policy





Team Science

- The quality and quantity of the integration is also diverse:
 - Unidisciplinary – Investigations within a discipline
 - Multidisciplinary -- Different fields work sequentially or independently
 - Interdisciplinary – Different fields working jointly in an interactive manner from their own perspectives
 - Transdisciplinary – Working jointly in a shared conceptual framework, synthesizes and extends previous models





- Readiness Factors for Collaboration:
 - Team members history of collaboration
 - Institutional support
 - Leader's collaborative orientation & experience
 - Team member's commitment to collaboration
 - Proximity of team members
 - Shared worldviews
 - Overlapping departmental identities





n Wendy Nilsen

- 301-496-0979 Office
- 301-795-5844 Cell
- nilsenwj@od.nih.gov

n Website: <http://obssr.od.nih.gov/>

