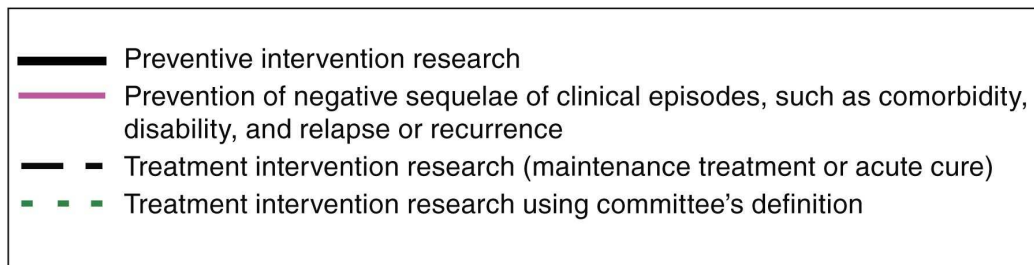
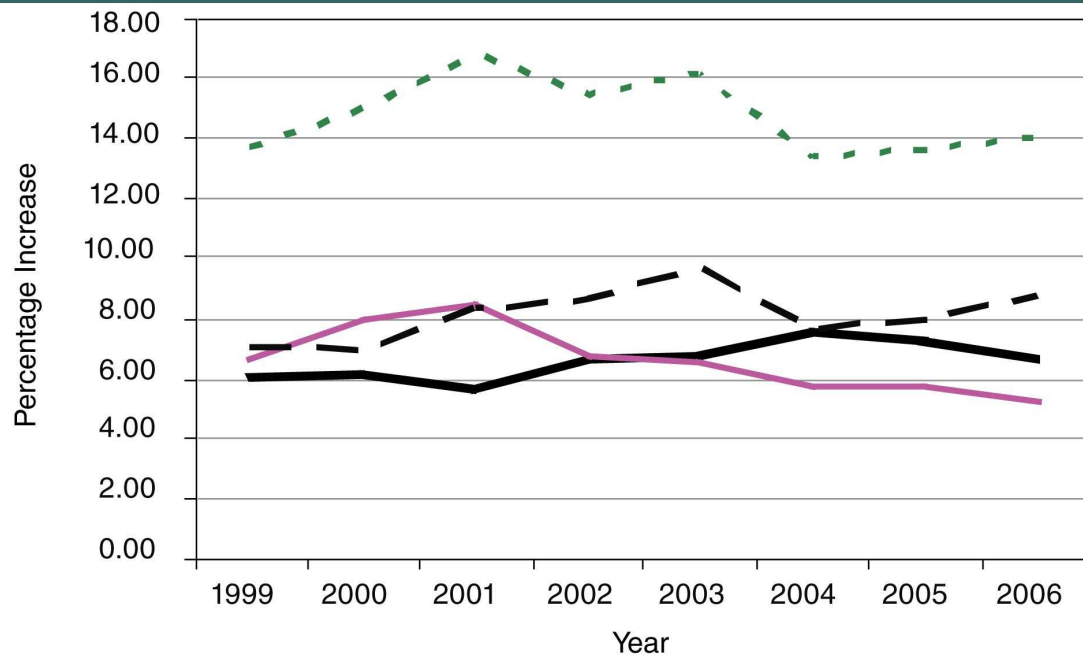


Continuing a Course of Rigorous Research: Overarching Recommendations

- 1 NIH should develop comprehensive 10-year plan for prevention and promotion research
- 1 Research funders should establish parity between research on preventive interventions and treatment interventions

Research Funding Illustration

Note: Y axis should be labeled "Percentage". Lines represent the percentage of the NIMH appropriation



Continuing a Course of Rigorous Research: 10-Year Priorities

- 1 Prevention (specific disorders and common risk factors) and promotion
- 1 Replication, long-term outcomes, and multiple groups
- 1 Collaborations across institutes and agencies for developmentally related outcomes
- 1 Further improve current interventions

Continuing a Course of Rigorous Research: 10-Year Priorities (Cont'd)

- 1 Guidelines and funding for economic analyses
- 1 Etiology and measurement of developmental competencies
- 1 Effectiveness of mass media and internet interventions
- 1 Address research gaps in populations and settings

Implementation Research

- 1 Need to move from efficacy toward effectiveness trials
- 1 Adapt (and evaluate) evidence-based program to community needs
- 1 Develop and test community-driven models

Opportunities for Linkages with Neuroscience

- 1 Interactions between modifiable environmental factors and expression of genes linked to behavior
- 1 Greater understanding of biological processes of brain development
- 1 Opportunities for integration of genetics and neuroscience research with prevention research

Panel Participants

- 1 Christopher Gordon, Ph.D.
Associate Director of Prevention, NIMH
- 1 Zili Sloboda, Sc.D.
President, Society for Prevention Research
Professor, Institute of Health & Social Policy, U
of Akron
- 1 Richard Spoth, Ph.D.
Director, Partnerships in Prevention Science
Institute, Iowa State University